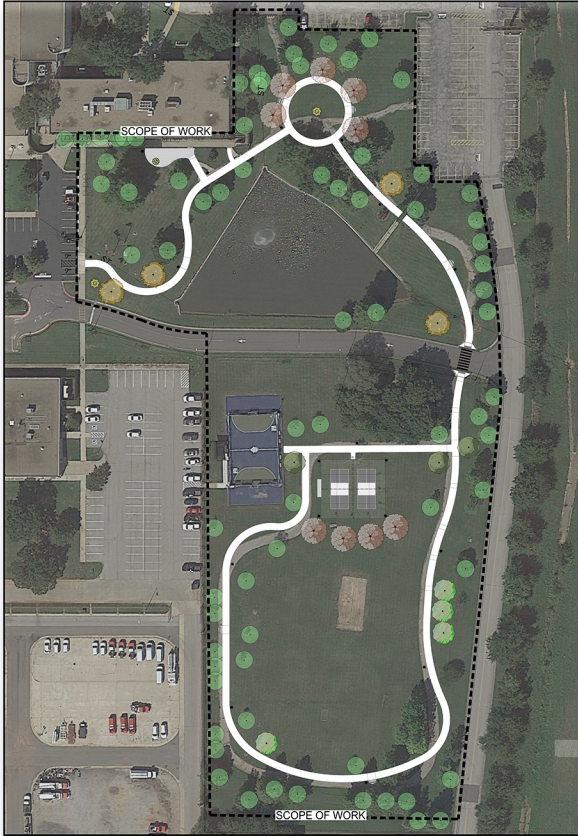


OKLAHOMA STATE UNIVERSITY OKLAHOMA CITY TSET GRANT TRAIL AND IMPROVEMENTS



DRAWING INDEX

SHEET NO. DESCRIPTION

GENERAL

G100 COVER SHEET, SHEET INDEX, VICINITY MAP
G101 GENERAL NOTES
G201 SURVEY DATA SHEET

LANDSCAPE

L100 DEMOLITION AND CLEARING PLAN
L200 NORTH TRAIL PLAN AND DETAILED LAYOUTS
L201 SOUTH TRAIL PLAN
L300 DETAILS
L301 DETAILS
L302 DETAILS
L303 DETAILS
L400 IRRIGATION PLAN
L401 IRRIGATION DETAILS

Project Information:

Project Name:
OKLAHOMA STATE UNIVERSITY
OKLAHOMA CITY
TSET GRANT TRAIL AND
IMPROVEMENTS

Project Location:
900 N PORTLAND AVE, OKLAHOMA
CITY, OK 73107

Issue Date: 01-13-2023

Cover Sheet

Sheet: 1 Of 12

AMERICANS WITH DISABILITIES ACT NOTES:
ALL FEATURES OF THIS PROJECT INCLUDING, BUT NOT LIMITED TO, SIDEWALKS AND HANDICAP RAMP WITHIN THIS PROJECT SHALL MEET ALL REQUIREMENTS OF THE AMERICANS WITH DISABILITIES ACT. WHERE SPECIAL LIMITATIONS ON EXISTING FEATURES WITHIN THE LIMITS OF THE PROJECT PREVENT FULL COMPLIANCE WITH THE ACT, THE CONTRACTOR SHALL NOTIFY THE LANDSCAPE ARCHITECT. THE CONTRACTOR SHALL NOT PROCEED WITH ANY ASPECT OF THE WORK WHICH IS NOT IN FULL COMPLIANCE WITH THE ADA WITHOUT PRIOR WRITTEN APPROVAL FROM THE LANDSCAPE ARCHITECT. ANY WORK WHICH IS PERFORMED WITHIN THE GUIDELINES OF THE ADA FOR WHICH THE CONTRACTOR DOES NOT HAVE WRITTEN APPROVAL SHALL BE CORRECTED AT THE CONTRACTOR'S EXPENSE. CROSS SLOPES FOR SIDEWALKS SHALL NOT EXCEED 1% AND SIDEWALK RUNNING GRADES SHALL NOT EXCEED 1% UNLESS OTHERWISE SHOWN.

OWNER
OKLAHOMA STATE
UNIVERSITY
STILLWATER, OK



CONSULTANT OF RECORD
LANDSCAPE ARCHITECT
CLS & Associates, LLC



Landscape Architects

825 N. Broadway, Suite 315
Oklahoma City, OK 73102
405-525-2220

www.LandscapesByCLS.com

GRANTOR
TOBACCO SETTLEMENT ENDOWMENT TRUST

